

Windows Based DVR

ClearVision DVR systems represent the best DVR technology available designed for demanding corporate and professional surveillance

Features

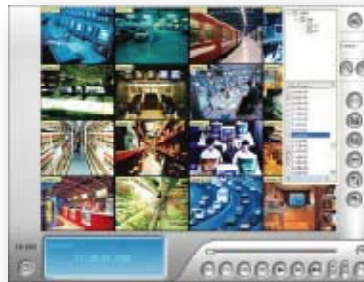
- Windows XP Professional
- Supports up to 16 Channels
- Analog & IP Cameras Supported
- Dual Display Support
- Internal Storage Capacity to 4.0TB
- Supports up to 16 ATM/POS Devices
- Third Party PTZ Dome Support
- Up to 720 x 480 (D1) Recording Resolution
- Intelligent Recording & Playback



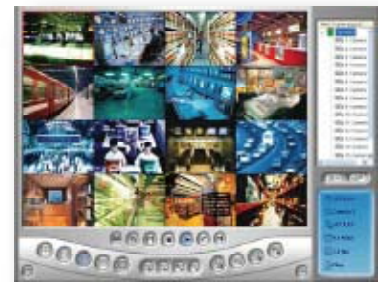
• Central Monitoring System Screen



• ViewLog Screen



• WebCam Multiview Screen



Hardware Specifications

Model	CV-CDVR600	CV-CDVR650	CV-CDVR800	CV-CDVR1120	CV-CDVR1240	CV-CDVR1480
Video Inputs	4, 8, 12, 16	4, 8, 12, 16	4, 8, 12, 16	8, 16	8, 16	16
Audio Inputs	1 (16 Optional)	2 (16 Optional)	4 (16 Optional)	8, 16	8, 16	16
TV Output	No	No	No	Yes	Yes	Yes
Recording Rate	30 fps	60 fps	120 fps	120 fps	240 fps	480 fps
Display Rate	30 fps	60 fps	120 fps	480 fps	480 fps	480 fps
Input Type	BNC					
Video Compression	Geo MPEG4, Geo MPEG4 (ASP), Geo H264, Geo H264 V2					
Compression Rate	Variable, 300:1 Maximum					
Video Resolution	D1, Half D1, CIF Resolution					
Networking	TCP/IP, LAN, WAN, Internet, Modem Dial-Up, Modem-to-Modem, ISDN					
Backup Device	DVD-RW, USB, HDD, NAS					
Alarms And Sensors	Up to 72 Inputs, Up to 144 Outputs (Optional External Modules Required)					
Operating System	Windows XP Professional SP3 (Windows Server 2003 Available)					
Processor	Intel Core 2 Duo 2.93GHz					
Motherboard	Intel G43 Chipset					
Max LAN Speed	10/100/1000 Mbps					
System RAM	2.0GB DDR2 667					
Operating System HDD	80GB					
Internal Storage	Up to 4.0TB					
Redundant Storage Support	RAID 0, 1, & 5 Available					
Video Card	512MB NVIDIA GeForce 8400 GS					
Power	115V, 12A Input					
Cooling	1x 80mm Front, 2 x 60mm Rear Fans					
Dimensions (L x W x H)	17.32" x 14.96" x 6.3"					
Weight	30 lbs					

Software Features

- Hybrid solution - integrating analog and IP video streams
- High screen resolution
- Touch screen support
- Full screen view
- Dual display operation
- Video analytics
 - > Unattended & missing object detection
 - > Advanced motion detection
 - > Object counting
 - > People counting
 - > Panorama view
 - > Defog function
 - > Intrusion Alarm
 - > License plate recognition
 - > Facial recognition
 - > Video stabilization
- Round-the-clock, motion, alarm and schedule recording
- Adjustable recording quality & frame rate per camera
- Screen pop-ups on alarm or motion
- Instant playback
- Digital watermark
- On screen video loss message
- Embedded PTZ control panel
- Full system logging
- Timeline search
- Object index search
- AVI, EXE & DVD format export
- Supports 1000 user accounts
- Multilevel password protection
- Authentication server
- Password expiration management
- Windows lockup
- Supports dynamic IP addresses
- Email Notification with attached video images on motion an alarm
- Email or telephone notification on video lost
- SMS alerts
- Remote Surveillance
 - > POS live view via browser
 - > 3G mobile phone support
 - > SSL encrypt connection support
 - > UPnP support
 - > Remote Emap
 - > Pop-up live images upon trigger in Remote Emap
 - > Remote playback
 - > Remote video download
 - > Remote PTZ control
- Point-of-Sale integration
 - > Up to 16 devices supported
 - > POS video text overlay
 - > POS field filter
 - > Abnormal transaction alert
 - > Transactions stored n MS-Access database
 - > Search by product, transaction, date
- Access control system integration
- Center V2* -Supports central monitoring from 800 stations
- Control Center* - Support central DVR administration
- Dispatch Server* - Network load balancing for large Center V2 server farms
- Vital Sign Monitor* - Server maintenance event alert system

* Requires Additional License Purchase

PTZ Protocol Support

- Ademco (Jupiter)
- Bosch (TC700, TC800)
- Canon (VC-C3, VC-C4)
- CBC Ganz (ZC-S120 Series)
- Chipper (V9KRV)
- D-Max Version Protocol
- Digi Dime (DOH-240)
- Direct Perception (PTU-D46)
- DynaColor (D-7720, D7722)
- Elitar (EL-PT830)
- Elbex (Matrix, 1000)
- EverFocus (EPTZ 1000, 500)
- GKB (SPD-221)
- Hi-Sharp (HS-CC600, HSCC610)
- JEC (ETXK8000, TK-S576B, S655)
- Kalatel Cybe Dome (KTD-312)
- Kampro 230X CCD Zoom Camera (GE Security)
- Kampro Technology (K-ZC23)
- Kenko (DMP23-H1)
- Liliin (PIH-7000, PIH-7600, PIH-7625)
- LG (LPT-OS553HQ)
- Miniton(54G2AHN, P)
- MZC (IR6018DN)
- Minking
- Messoa (SDS600 Series, D-700 Series)
- NanWang (NVD2300PNT)
- Panasonic (WV-CS850, CS854)
- Pelco (P, D, Spectra III, SD4-WO)
- Phision (22X, VCC5i)
- SAE (DR-E588)
- Samsung (SPD-1600, SPD-3000, SCC-641, SCC-643, SPD-3300)
- Sensormatic (Ultra IV)
- Sony (EVI-D100, D100T)
- TOA (CC551)
- VIDO (Dome, G65)
- YAAN
- YOKO (YK-2E00)

IP Camera Support

- Arecont Vision (AV1300, AV3200, AV3100, AV5100)*
- AXIS (206, 207, 207W, 207MW, 210, 211, 211A, 212 PTZ, 213 PTZ, 214 PTZ, 216FD, 216FD-V, 221, 223M, 225FD, 231D+, 232D+, 233D)*
- GeoVision (All Models)
- IQinvision (301, 302, 510, 511, 701, 702)*
- Mobotix (M12)
- Panasonic (BB-HCM110, BB-HCM311, BB-HCM371, BB-HCM381, BB-HCM403, BB-HCE481A, BL-C10, BL-C30)
- SONY (SNC-CS10, SNC-CS11, SNC-CS50N, SNC-CS50P, SNC-DF40N, SNC-DF40N, SNC-DF40P, SNC-DF50N, SNC-DF50P, SNC-80N, SNC-DF80P, SNC-P1, SNC-P5, SNC-RX550N, SNC-RX550P, SNC-RZ25N, SNC-RZ25P, SNC-RZ50N, SNC-RZ50P)*

* = Requires 3rd Party NVR License

Client Applications

- Multiview Application
- Remote Playback
- Remote Viewlog
- Remote Emap
- Control Center*
- Center V2*
- Dispatch Server*
- Vital Sign Monitor*

* Requires Additional License Purchase

Monitor not included.
 ClearVision and the ClearVision Logo are registered trademarks of ClearVision, Inc.
 Product specifications and availability are subject to change without notice.
 ©Copyright 2008, ClearVision, Inc. All rights reserved.